

The /igh/ Family



Level 6

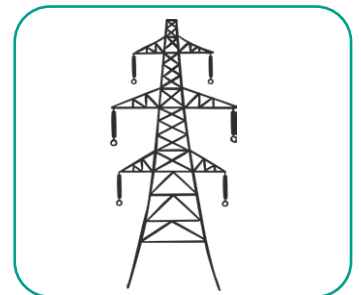
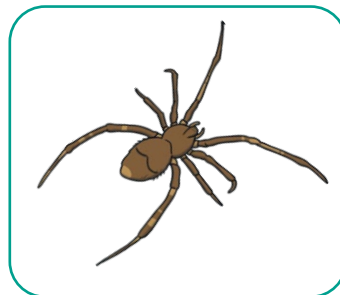
Write the four other graphemes that can represent the /igh/ sound.

igh



Write labels for these pictures. Think carefully about which grapheme to use for the /igh/ sound. Think about where the sound is in the word, how many syllables it has and what letter follows the /igh/ sound.

You could use the /igh/ Sound Family Sheet to help you think about which grapheme to use.



Now write three sentences, using some of the words from above. You might even be able to use more than one of the words, containing the /igh/ sound, in your sentence.

1. _____

2. _____

3. _____